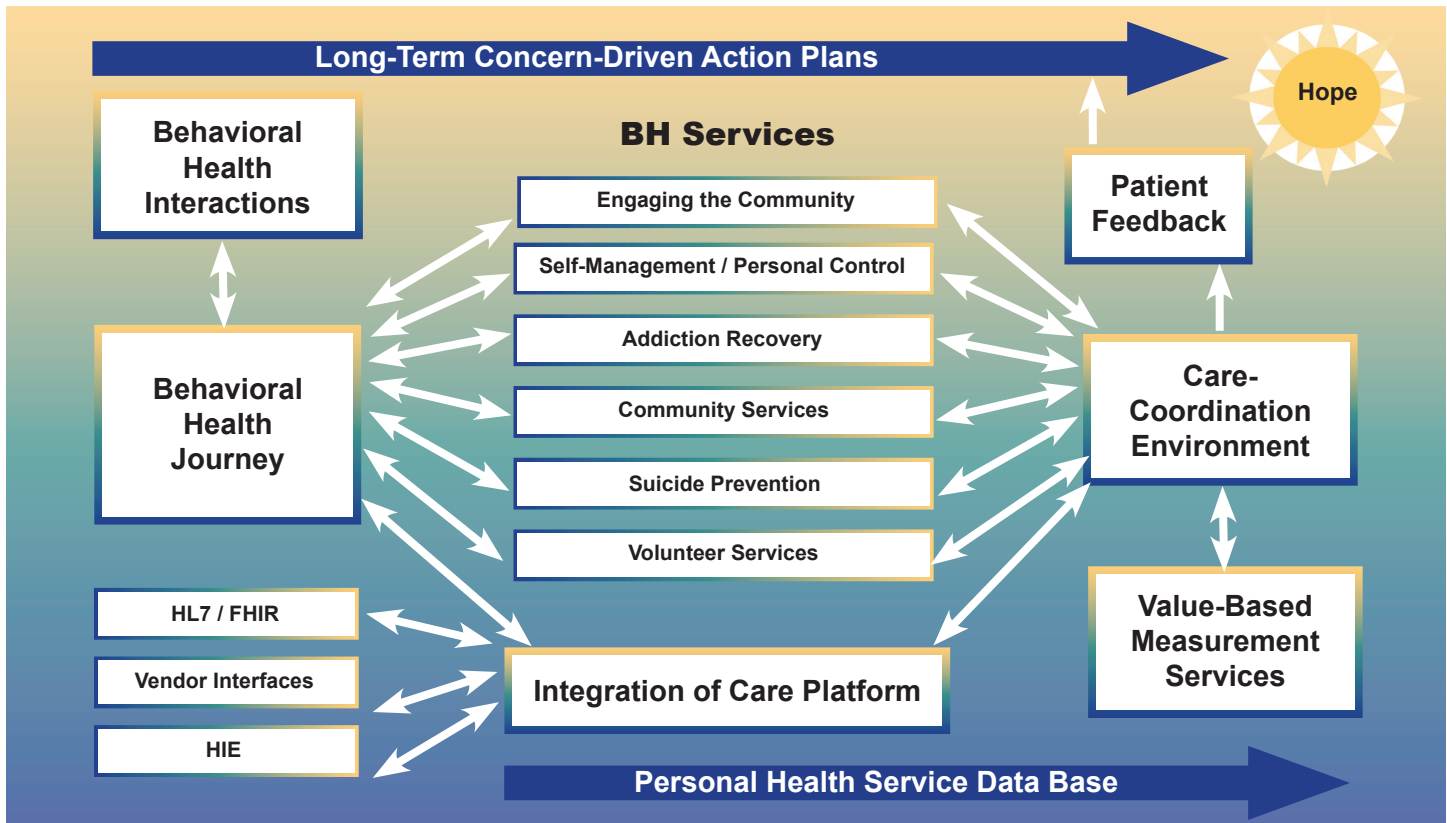


Behavioral Health Integrated Care



Dramatic change is needed; changes needs funding

Behavioral Health Integrated Care brings together a set of isolated people, with their own individual problems, concerns and facilities into a personalized system of care. It creates a series of events supporting a long journey of behavior health care. Today the patient is often pushed out of facilities without a "safe" treatment care plan with coordinated services. Unfortunately, the gaps in care, and the lack of follow-up from patients because of their mood disorders and depression, can lead to substance abuse overdoses, death and/or suicide.

Data from the Center for Disease Control and Prevention (CDC) show that the number of deaths due to behavioral health issues, is disbursed nationwide and mourned locally or regionally. However, if they were all in one place, it would be like a plane crash per day. If you combine all the Veterans that have committed suicide since 2005 it would fill a large stadium. This can be changed. Lives can be saved!

Build Behavioral Health Integration into your Systems And Process With Lifepulse360

- Add a set of Behavioral Health Interactions Messages
- Provide Transfer of Care Messages with SAFE CARE TRANSFERS and agents monitoring the care transition

- Provide links to community resources together that builds a chain of care and trust built through lifepulse360 bridging, information gathering and protection agents
- Leverage Electronic Health Records when available (30%)
- Support small providers with a set of cloud-based interaction and transfer user interface and control services

Designed to Reduce the "Patient Drops" between BH-Providers and Patients Attrition and Non-Compliance

- Improve poor patient and caregivers satisfaction that currently exist
- Address the sadness and burnout of care coordinators and behavior health providers and they will have a more positive impact on patients' lives

LifePulse360 can address fragmented care concerns with open-interfaces that connect "Care Plans" with SAFE TRANSFERS

- Uses a set of patent pending intelligent agents
- Uses person-centric concern-based approach that can track individual transfers
- Supports connected Community-Resource Management



John C. Dodd
President and Lead Consultant
John.Dodd@BDC-healthit.com
410-598-7266 / www.BDC-healthit.com

